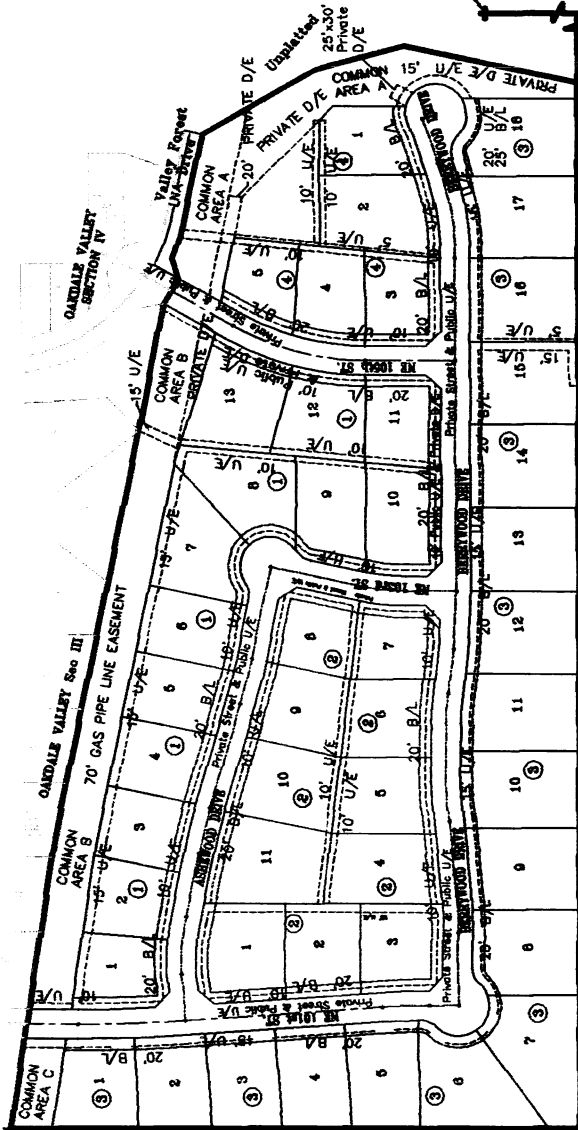
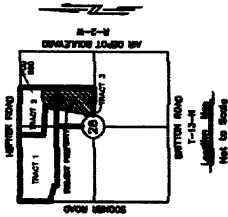


Sales Plat
HEIGHTS II AT OAKDALE VALLEY
 An Addition to the City of Oklahoma City
 A Subdivision of Part of the NE 1/4, Sec. 28, T13N, R27W, L1M,
 Oklahoma County, Oklahoma



NW Corner of the West½
 of the NE¼ of
 Section 28, T13N, R27W, L1M.

NE Corner of the NE¼
 of the NE¼ of
 Section 28, T13N, R27W, L1M.

SALES PLAT
Heights II at Oakdale Valley
 Oklahoma County, Oklahoma
 Sheet 2 of 2

ISCH & ASSOCIATES, INC.
 CIVIL ENGINEERING - LAND PLANNING - LAND SURVEYING
 3600 S BOWLING, SUITE 205 - OKMOR, OKLAHOMA 73013
 OFFICE (405) 348-1163 - FAX (405) 348-0861
 Certificate of Authorization No. 1129 Exp. Date 6-30-09

SALES PLAT ONLY
 Verify All Lot Dimensions, Easements
 & Building Line Locations On Final
 Plat As Filed Of Record